

100 N Tampa St. Tampa, FL 33602

# 100 North Tampa

Tampa's Premier Downtown Address



Unique Two-Floor Opportunity  
Up to 32,276 SF



**CUSHMAN &  
WAKEFIELD**

# 100 North Tampa

## Highlighted Features

- Up to 32,276 RSF of contiguous space
- Available 10/1/2023
- Private interconnecting stairwell
- Ideal for Law or Financial Services Firm
- Well-appointed lobby and reception area
- High-end build out with modern finishes
- Floor-to-ceiling windows
- Build out includes a mix of offices, administrative areas, conference rooms, and large kitchenette on 22nd floor
- Panoramic views of Hillsborough River, University of Tampa, and downtown skyline



## On-Site Amenities



Concierge Services  
and Tenant Amenity  
Center



New Conference  
Rooms



On-Site  
Parking Garage



Newly Renovated  
Fitness Center



Regions Bank  
Branch and Atm



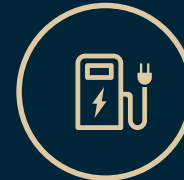
Sundry Shop



Auto Detail Center



Dry Cleaners



Ev Charging  
Stations





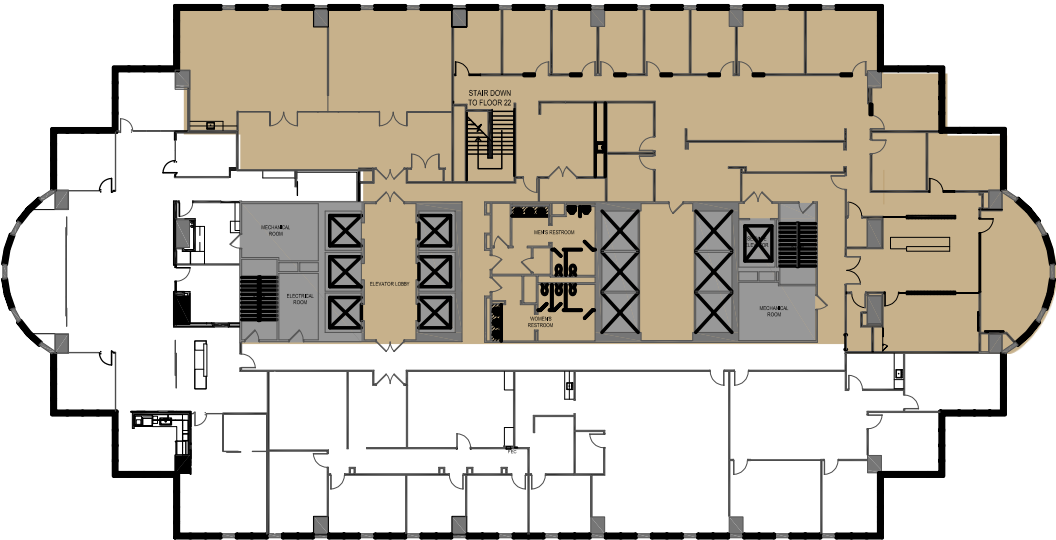
# High-End Offices with Stunning Views

Up to 32,276 RSF of Contiguous Space Available 10/1/2023

## Suite 2200: 22,036 RSF



## Suite 2300 & 2310: up to 10,240 RSF





## For leasing information

Robin Bishop  
+1 813 250 1820  
[robin.bishop@cushwake.com](mailto:robin.bishop@cushwake.com)

Nina Fishman  
+1 813 204 5352  
[nina.fishman@cushwake.com](mailto:nina.fishman@cushwake.com)

201 N Franklin Street  
Suite 3300  
Tampa, Florida 33602



[100nt.com](http://100nt.com) / [cushmanwakefield.com](http://cushmanwakefield.com)

©2021 Cushman & Wakefield. All rights reserved. The information contained in this communication is strictly confidential. This information has been obtained from sources believed to be reliable but has not been verified. NO WARRANTY OR REPRESENTATION, EXPRESS OR IMPLIED, IS MADE AS TO THE CONDITION OF THE PROPERTY (OR PROPERTIES) REFERENCED HEREIN OR AS TO THE ACCURACY OR COMPLETENESS OF THE INFORMATION CONTAINED HEREIN, AND SAME IS SUBMITTED SUBJECT TO ERRORS, OMISSIONS, CHANGE OF PRICE, RENTAL OR OTHER CONDITIONS, WITHDRAWAL WITHOUT NOTICE, AND TO ANY SPECIAL LISTING CONDITIONS IMPOSED BY THE PROPERTY OWNER(S). ANY PROJECTIONS, OPINIONS OR ESTIMATES ARE SUBJECT TO UNCERTAINTY AND DO NOT SIGNIFY CURRENT OR FUTURE PROPERTY PERFORMANCE.